

PP LC 2x M2.5 holes recep. SM, 1.1 seal

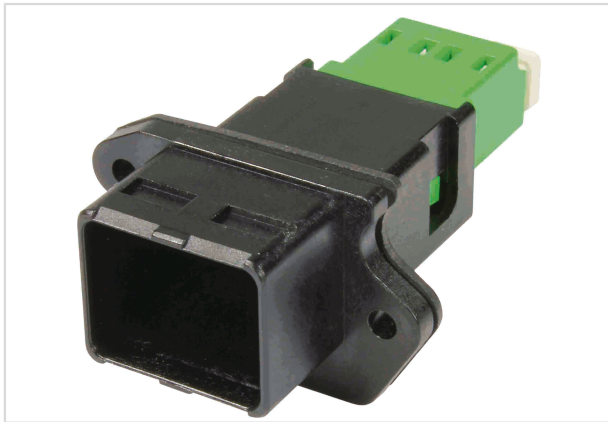


Image is for illustration purposes only. Please refer to product description.

Part number	09 57 442 0503 001
Specification	PP LC 2x M2.5 holes recep. SM, 1.1 seal
HARTING eCatalogue	https://b2b.harting.com/09574420503001

Identification

Category	Connectors
Series	HARTING PushPull (V4)
Identification	LC duplex
Element	Panel feed trough set
Description of the contact	Singlemode
Description of hood/housing	Compact

Version

Locking type	PushPull
Number of contacts	2

Technical characteristics

Limiting temperature	-40 ... +70 °C
Mating cycles	≥200
Degree of protection acc. to IEC 60529	IP65 IP67

Material properties

Material (hood/housing)	Thermoplastic
Colour (hood/housing)	Black
Material flammability class acc. to UL 94	V-0
RoHS	compliant
ELV status	compliant



Material properties

China RoHS	e
REACH Annex XVII substances	No
REACH ANNEX XIV substances	No
REACH SVHC substances	No

Specifications and approvals

Specifications	IEC 61076-3-106 Variant 4 (V4)
Approvals	DNV GL

Commercial data

Packaging size	1,000
Net weight	6.62 g
Country of origin	Germany
European customs tariff number	85389099
eCl@ss	27440101 Rectangular connectors (set)